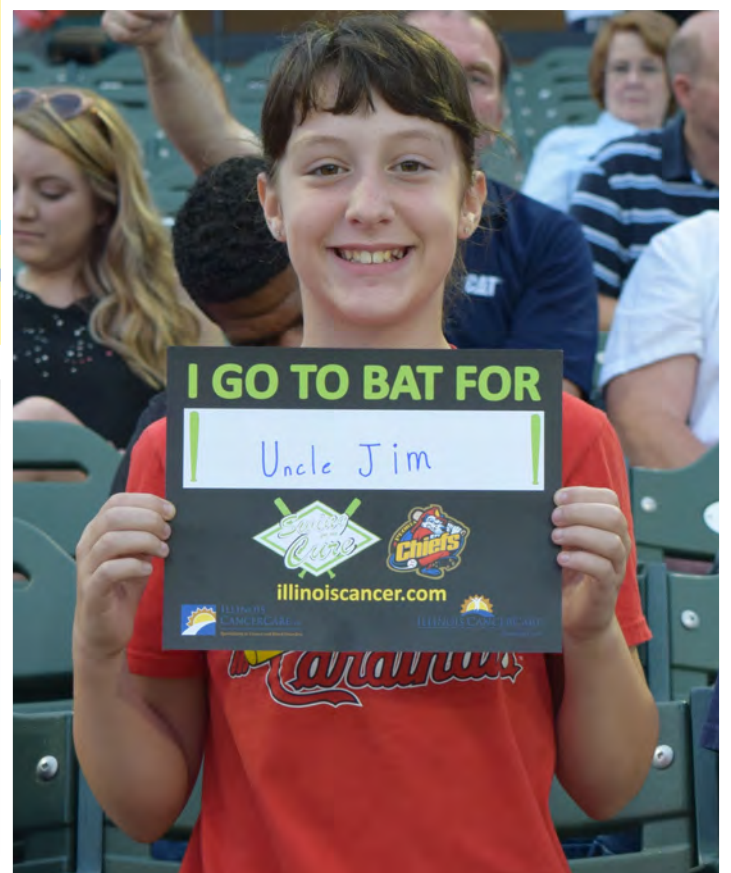


ILLINOIS CANCERCARE

Free Patient Newsletter • July/Aug/Sept 2015 • Issue 31



Articles Inside:

- Meet Our New Executive Director - Tonda Thompson
- Golfin' In The Wild Announcement
- Top Enroller in Clinical Research
- Drug Development and Approval

Swing for the Cure



ILLINOIS
CANCERCARE, P.C.
Specializing in Cancer and Blood Disorders

Contact Us:

Toll Free: 1.866.662.6564 • Peoria: 309.243.3000
www.illinoiscancercare.com • www.illinoiscancer.com
8940 North Wood Sage Road, Peoria, IL 61615



ILLINOIS CANCERCARE
foundation

ILLINOIS CANCERCARE

Table of Contents

Illinois CancerCare Mission & Values 2

Meet Our New Executive Director 3

Golfin’ in the Wild 4

Our Giving Community 5

Nutrition | Word Search and Sudoku Puzzles 6

Groundbreaking Research 7

Drug Development and Approval. 8

Drug Development and Approval (continued) 9

Drug Development and Approval (continued) | Ask the Patient Navigator 10

Our Giving Community | Word Search and Sudoku Puzzle Answers 11

Illinois CancerCare Pharmacy 12

Our Giving Community | Swing for the Cure. 13

Calendar of Events/Descriptions 14

Calendar of Events/Descriptions (continued) 15

Illinois CancerCare Physicians. 16

OUR MISSION

To provide comprehensive, compassionate care that enhances the lives of patients and their families

OUR VALUES

Patients first
Treat others with respect and compassion
Open and timely communication
Commitment to research
Invest in personal and professional development
Take ownership in our practice
Positive attitude

Meet Our New Executive Director: Tonda Thompson

The Illinois CancerCare Foundation is excited to welcome Tonda Thompson to the team as our new Executive Director. Tonda started with the Foundation mid May and brings more than two decades of philanthropic experience and expertise in the cancer field to the Foundation. For the past 23 years, Tonda has worked for the American Cancer Society; 14 years as a Regional Vice President and most recently as the State of Illinois, Relay For Life Director. Tonda is a proud "Redbird" graduating from Metamora Township High School and Illinois State University with her B.S. in Community Health Education and M.S. in Health and Human Service.

Tonda shared, *"It is an honor to be given the opportunity to be part of the Illinois CancerCare Family. I feel privileged to serve one of the largest private oncology practices in the nation dedicated to helping patients and their families overcome a cancer diagnosis. I am excited to begin this new chapter and look forward to continuing the great work of the Foundation right here in central and western Illinois."*

Tonda wholeheartedly supports the Foundation's belief that our patients must have available to them every possible weapon in their battle. She is committed to working with community volunteers and leaders, many of them cancer survivors, to ensure patients are receiving state-of-the-art treatment, leading edge breakthrough research and medicines supported with education and awareness programming.

Recently Tonda expressed how she was moved by the good work of the Foundation, *"In my short time with the Foundation I have seen firsthand how the Foundation helps cancer patients and their families while allowing them to stay in their own home. **The Foundation puts Hope and Compassion in action! THANK YOU** to all supporters of the Illinois CancerCare Foundation. With your help we are participating in groundbreaking research, providing compassionate patient support and service while delivering lifesaving care. Your support is giving hope and saving lives. Together we will continue to fight to find cures for many types of cancer through nationally recognized research treatment."*

Over the next few months, Tonda looks forward to connecting with our Foundation friends, partners, and board members. She is eager to work with both the Foundation's Executive and Advisory Boards to identify what is needed to take the Foundation to the next level. As Tonda says, *"We have important work to do! Cancer doesn't sleep and patients need our help!"*

Tonda lives in Peoria with her husband Jef. They have two children, Jessica (21 yrs) and Michael (17 yrs). In her free time, Tonda enjoys spending time with her family, gardening, photography, walking/biking on the Rock Island Trail and watching the Colts.



Summer kicks off our event season! Tonda will be attending the following events and would like to invite you to come, meet her and participate in these wonderful fundraising events.

The fourth annual **Leather and Leis River Fun and Party**, sponsored by the Central Illinois Parrot Head Club will begin with registration at Kuchies on the Water at 10:00 am. Whether by motorcycle, boat or car, you can spend the day with great group touring some wonderful riverfront stops. The ride will end at New Amsterdam on the Peoria riverfront with live music provided by Billy Washburn. This year there will be a party bus and seating is limited. Email officers@ciphc.org for tickets. For more details about this event, visit <http://www.ciphc.org>.

The fifth annual **Morton BBQ Throwdown** will take place the weekend of July 24/25. This is a wonderful community activity that provides fun for young and old. Sanctioned by the Kansas City BBQ Society, the event brings together 48 professional teams from the nation to compete. This year the event is adding a pie contest (with an auction of the pies after the judging!), a Friday night wing contest for the professional teams, pig races for the whole family to enjoy, and a Saturday evening bags tournament. The Foundation is fortunate to have been the charity sponsor with this group since its inception. To date, this event has raised over \$65,000. See more about this event in the announcement on page 5 or visit www.mortonbbqthrowdown.net.

Finally, the fourth annual **Golfin' in the Wild Event** will be held on Saturday, August 15 at Wildlife Prairie Park. Coordinated by the Foundation's Young Leaders Board, this unique, nine-hole golf course is geared for the golfer of any skill level. Many fun activities and refreshments are provided on the course and a dinner, silent auction and raffle are held after golfing. For more information, visit www.illinoiscancer.com and click on the Golfin' in the Wild logo.



Fighting cancer one swing at a time.

Join us for Golfin' in the Wild at Wildlife Prairie Park benefiting the Illinois CancerCare Foundation. The event will feature a unique golf course set up throughout the Wildlife "terrain" that all skill levels can enjoy. After nine holes of wild excitement, join all the golfers inside for great food and entertainment. You won't want to miss this Wild Good Time!

SATURDAY, AUGUST 15, 2015

WILDLIFE PRAIRIE PARK

REGISTRATION: 3 PM | SHOTGUN START: 3:30 PM

\$50/TICKET \$95/TWOSOME \$180/FOURSOME

RECRUIT YOUR FAN CLUB THIS YEAR!

NEW! GALLERY TICKET \$40/TICKET

RAFFLE: \$20 EACH OR 3 FOR \$40



- iPad
- CHICAGO GETAWAY
- TRAVEL PACKAGE



All Proceeds Benefit: **ILLINOIS CANCERCARE**
foundation

Visit www.IllinoisCancer.com/GolfinInTheWild/ Or call 309.243.3437



JULY 24 & 25, 2015
DOWNTOWN MORTON, IL.
Admission \$5 donation per person
Children 17 & under with adults
FREE

www.mortonbbqthrowdown.net

LIVE MUSIC

FRI. 5 -7:30p Midnight Special 7:30-10p Jury's Out

SAT. Noon-2pm Academy of Fretted Instruments

2 - 6p Three & 1/2 Men 6 - 10p JammSammich

\$2.00 16oz Drafts in the Beer Tent!

Friday

5 - 10p Food Vendors & Beer Garden

5-5:30p Pie Baking Contest turn in

6p Ham Bone Express Pig Racing

7:30p Pie Winners & Auction on Stage

7:30p Ham Bone Express Pig Racing

9p Ham Bone Express Pig Racing

Saturday

8a-4p Backyard Competition

10a-5p Craft/Vendor Fair

10a-5p Bounce Houses

11a-10p Food Vendors & Beer Garden

11a-2p Unique Twist Balloons

12-6:30p Silent Auction

1p Ham Bone Express Pig Racing

3-5p Face Painting

3:30 Ham Bone Express Pig Racing

4p Awards Ceremony on Stage

5:30p Soapbox Derby (Registration 5p)

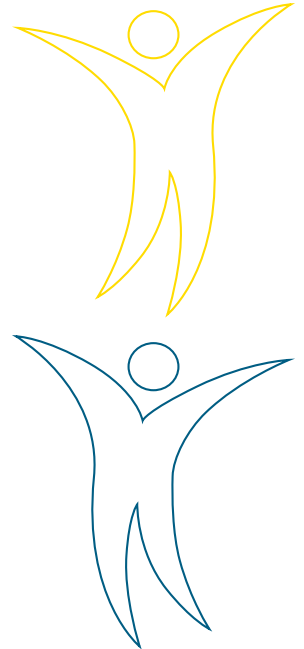
6p Kid's Q Competition

6p Ham Bone Express Pig Racing

6:30p Bags Tournament

8:30p Ham Bone Express Pig Racing

Raffle for Big Green Egg Cooker, 2 Pairs Maui Jim Sunglasses, & \$500 Gift Card to Jones Brothers Jewelers
 Tickets available at Morton Tourism Office, 204 S. First Morton, IL CancerCare Center or Call: (309) 266-5135
 Drawing 6 pm 7-25-15



CUREageous

Help us fight cancer in a personal way!

Remember a loved one, support a cancer survivor, thank a caregiver
 or show appreciation to your healthcare provider and/or team with
 a special message in the 2015 CUREageous program booklet!



Visit www.IllinoisCancer.com, find the CUREageous block,
 and submit your message today.



ILLINOIS CANCERCARE
 foundation



Sharon Windsor is a Registered Dietician for the Hult Center for Healthy Living.

Nutrition Facts (per one 20 oz. serving):

557 calories, 17 g fat,
77 g carbohydrates,
58 g sugar, 24 g protein

Adapted from:
All Recipes

Recipe from Sharon Strawberry Banana Nutella Smoothie

For a sore mouth or throat, this high calorie-high protein smoothie may relieve some of the pain on a warm summer day.

Ingredients:

- 6 fl. oz. whole milk
- 6 oz. vanilla fat-free Greek yogurt
- 1 banana, sliced
- 4 frozen or fresh strawberries
- 2 Tbsp. chocolate hazelnut spread (Nutella)



Directions

1. Blend milk, yogurt, banana, strawberries, and Nutella until smooth. Yields one 20 oz. serving.
2. Top with whipped cream and chocolate sauce, if desired. Enjoy!

Word Search

Theme: Summer

A	H	C	S	U	N	S	H	I	N	E	G	M	F	C
B	O	V	U	N	D	F	t	N	G	F	O	N	S	W
H	T	D	M	D	W	H	O	P	I	C	N	I	C	S
F	D	Q	M	E	Q	K	N	S	G	U	D	D	N	H
H	O	M	E	R	U	N	E	F	R	I	G	E	U	U
K	G	W	R	M	M	U	R	U	E	C	A	M	P	O
M	L	R	W	J	P	I	D	N	M	E	B	A	B	B
C	F	L	O	W	E	R	S	S	I	C	E	L	F	I
B	K	K	U	P	O	L	A	H	H	R	U	O	R	K
A	E	B	T	O	I	E	G	N	R	E	R	N	G	I
R	B	R	D	I	G	R	A	D	U	A	T	I	O	N
B	H	D	O	G	A	S	P	B	O	M	A	F	P	G
E	Y	H	O	S	R	N	M	K	D	F	O	U	M	C
Q	E	U	R	E	D	A	N	D	E	L	I	O	N	R
U	T	M	S	Y	E	M	C	I	T	D	R	N	A	E
E	P	A	S	T	N	Q	A	N	O	R	B	G	C	A

Words

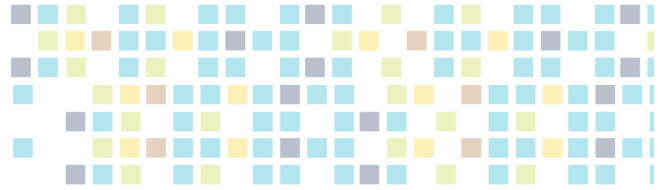
Homerun
Summer
Hotdog
Sunshine
Graduation
Garden
Biking
Fun
Flowers
Icecream
Dandelion
Camp
Outdoors
Picnic
Barbeque

Sudoku

6			3					9
2		1		4	5	6		
	5	4				8	1	
	3	5		9	4			7
1		7			6			
		2		5				
		3	5	8		7		
						1	9	
	8				1	5		



ILLINOIS
CANCERCARE, P.C.
Specializing in Cancer and Blood Disorders



Illinois CancerCare Recognized by Alliance for Clinical Trials in Oncology (Alliance) as

One of Nation's Top Enrollers in Clinical Research



Alliance
for Clinical Trials
in Oncology

through our satellite facilities enables us to bring clinical trial opportunities to the patients rather than the patients having to travel great distances to get to trials at larger academic-based institutions.

Groundbreaking **RESEARCH**. Lifesaving **CARE**.
Illinois CancerCare... because **LIFE** is precious.

Drug Development and Approval

Trupti Sherbet Clinical Research Associate

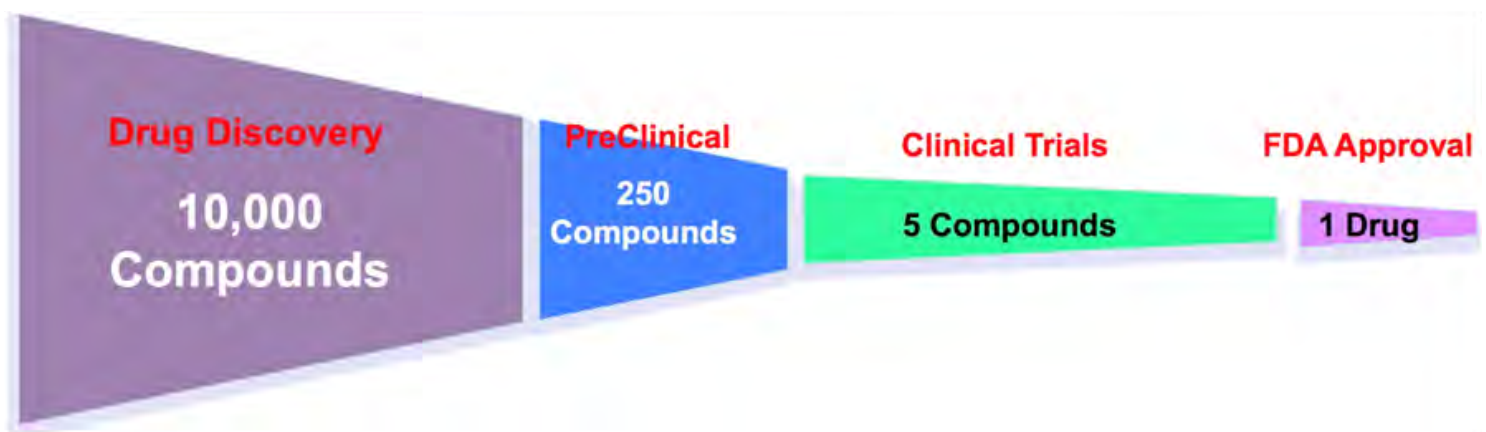
How a drug gets from the lab to the patient

Drug development and approval is an extremely regulated process. The foremost goal of a drug sponsor is to receive FDA approval for sale in the United States. Fifty-three years ago, the due diligence of FDA medical officer Dr. Frances Kelsey prevented a catastrophe by ensuring the sedative thalidomide was not approved for use in the United States. She based the decision on the fact this drug was not tested on pregnant animals. In the early 1960's reports were received from innumerable women who gave birth to children with severe birth defects. These women had taken thalidomide. This tragedy strengthened the regulatory and scientific world of product development and review. In 1962 Congress enacted the Kefauver-Harris amendments to the Food, Drug and Cosmetic Act. The amendments not only benefited patients, the amendments helped the industry, raising scientific standards that bring us to the sophisticated, science-based life sciences industry of today; providing a robust, regulated pharmaceutical industry.

What is a drug as defined by the FDA?

A drug is any product that is intended for use in the diagnostic, cure, treatment, or prevention of disease; and that is intended to affect the structure or any function of the body.

New discoveries by the great scientific minds of today and advanced computer technology have presented new ways of understanding complex diseases. The costs range between \$800 million to \$1 billion to invest in drug development and approval. As scientists harness this knowledge and bring up to 10,000 compounds through the research and development pipeline only one drug receives FDA approval. It takes between 10 and 15 years to develop a new drug from the moment it is discovered until it is available to patients.



Average cost of research and drug development = \$800 million to \$1 billion

Drug Development and Approval Continued

How a drug gets from the lab to the patient

Once the FDA decides the benefits of a drug outweigh the known risks, the drug will receive approval. But if there are problems with an NDA (New Drug Application) or if more information is necessary to make that determination, the FDA may issue a complete response letter. There are a couple of setbacks the sponsor may experience: unexpected safety issues or failure to demonstrate a drug's effectiveness. A sponsor may be asked to conduct additional trials including more people, different ethnicities or for a longer period of time. Manufacturing issues may also lead to delayed or denied approval. Drugs must also be manufactured in accordance with standards called good manufacturing practices. The FDA inspects manufacturing facilities before a drug can be approved. If a facility is not ready for inspection, approval can be delayed. A company may manufacture a certain amount of a drug for clinical trials but when it is time to mass-produce a product, the company may lose a supplier or have quality control issues that result in a difference in the end product. It is imperative the product tested be the same as the product marketed.

Drug Research & Development



After a new drug compound is discovered, the sponsor must test the drug on animals for toxicities. This information is gathered to assess the safety and efficacy of the drug being investigated or researched. Following this process, the sponsor submits an IND application to the FDA to allow the drug to go through the clinical trials process. The FDA ensures the proposed new drug does not place human subjects in unreasonable risk or harm. The FDA also ensures that an informed consent process is in place to protect the patients on a clinical trial. The Phase 1, Phase 2 and Phase 3 trials gather useful information on patient safety and effectiveness. The trials also provide critical information on the ideal dosage, creating a culture of quality innovation. By participating in clinical trials patients have access to new drugs, contribute to medical research and establish new standards of care for future generations.



Drug Development and Approval Continued

How a drug gets from the lab to the patient

Subsequently, the drug sponsor officially meets with the FDA and submits an NDA. This application includes the animal and human data analyses, information regarding the drugs ADME and PK within the body as well. After the NDA is received the FDA has 60 days to make a final decision. A panel of CDER members (physicians, statisticians, chemists, pharmacologists and scientists) reviews the NDA, and the drug labeling to communicate to health care professionals and patients. Following a final inspection the FDA approves the application or issues a response letter. The Prescription Drug User Fee Act passed in 1992 enables the FDA to fast track and provide an accelerated approval to new drugs with promising prospects with the same thorough review process. FDA MedWatch is a voluntary system used to make it easy for everyone to report unexpected toxicities and take definitive action as needed.

GLOSSARY:

1. IND – Investigational New Drug
2. FDA – Food and Drug Administration
3. NDA – New Drug Application
4. CDER – Center for Drug Evaluation and Research
5. PDUFA – Prescription Drug User Fee Act
6. SAR – Structure Activity Relationships
7. ADME – Absorption, Distribution, Metabolism, Excretion
8. PK - Pharmacokinetics

[“ClinicalTrials.gov”](http://ClinicalTrials.gov)
is a powerful tool for the health care consumer, and it has untold benefits for the public health, too.

- National Library of Medical Director
Donald A. B. Lindberg M.D.

Resources: www.fda.gov; www.nlm.nih.gov; www.innovation.org; www.clinicaltrials.gov; www.steveblank.com

Ask the Patient Navigator

Is there a cost to participate in a study?

“Routine care” includes medications, tests or procedures that would have been ordered by the doctor even if the patient did not go on the trial. These are usually covered by the insurance company. If the drug is not approved for the type of cancer being treated, it will be provided free of charge. If a test or procedure is only done because of being in a trial, it will be paid for by the study sponsor. Staff always check with the patient’s insurance provider to make sure participation in a trial is allowed and that the routine care items will be covered.



4TH ANNUAL
CENTRAL ILLINOIS PARROT HEAD CLUB'S
LEATHER & LEIS
RIVER RUN & PARTY

BENEFITTING
ILLINOIS CANCERCARE
foundation

TICKETS
\$10 IN ADVANCE | \$15 DAY OF
ADVANCED TICKETS - 309-323-0017 OR AT OFFICERS@CIPHC.ORG

July 11th
10 am - 8pm

SCHEDULE:

- KUCHIES ON THE WATER 10:00-11:30
- BURGER BARGE 11:00-1:00
- BANANAS BEACH BAR 1:00-3:00
- NO WAKE ZONE 3:00-5:00
- NEW AMSTERDAM 5:00-8:00
- BILLY WASHBURN | LIVE MUSIC

Word Search & Sudoku Solutions

A	H	C	S	U	N	S	H	I	N	E	G	M	F	C
B	O	V	U	N	D	F	t	N	G	F	O	N	S	W
H	T	D	M	D	W	H	O	P	I	C	N	I	C	S
F	D	Q	M	E	Q	K	N	S	G	U	D	D	N	H
H	O	M	E	R	U	N	E	F	R	I	G	E	U	U
K	G	W	R	M	M	U	R	U	E	C	A	M	P	O
M	L	R	W	J	P	I	D	N	M	E	B	A	B	B
C	F	L	O	W	E	R	S	S	I	C	E	L	F	I
B	K	K	U	P	O	L	A	H	H	R	U	O	R	K
A	E	B	T	O	I	E	G	N	R	E	R	N	G	I
R	B	R	D	I	G	R	A	D	U	A	T	I	O	N
B	H	D	O	G	A	S	P	B	O	M	A	F	P	G
E	Y	H	O	S	R	N	M	K	D	F	O	U	M	C
Q	E	U	R	E	D	A	N	D	E	L	I	O	N	R
U	T	M	S	Y	E	M	C	I	T	D	R	N	A	E
E	P	A	S	T	N	Q	A	N	O	R	B	G	C	A

6	7	8	3	1	2	4	5	9
2	9	1	8	4	5	6	7	3
3	5	4	9	6	7	8	1	2
8	3	5	1	9	4	2	6	7
1	4	7	2	3	6	9	8	5
9	6	2	7	5	8	3	4	1
4	1	3	5	8	9	7	2	6
5	2	6	4	7	3	1	9	8
7	8	9	6	2	1	5	3	4



ILLINOIS
CANCERCARE, P.C.

Specializing in Cancer and Blood Disorders

ILLINOIS CANCERCARE PHARMACY

The Right Choice for Our Patients

We Are **Cutting EDGE**. We Are **YOUR RESOURCE**.

We Are Your Pharmacy.

- A full retail pharmacy on-site
- Specializing in cancer and blood disorder drugs and their potential interactions
- Reserved for use by Illinois CancerCare patients ONLY
- Many hard-to-find cancer and blood medications available
- Most prescription insurance plans accepted
- Online medication refill order available

We Are Your CancerCare **TEAM**



Did You **KNOW?**

The IV Prep staff mixes on average **1,500 chemo mixes per month in Peoria** and **1,200 per month at the clinics**.

Our technicians mix chemo 120 shifts at clinic each month.

We have **tripled in size** in the last 5 years. The pharmacy fills over 14,000 prescriptions annually.

The pharmacy has done about 1,000 prior authorizations for commercial insurance plans over the past year and many more for Medicaid.

The retail pharmacy has helped patients receive over **\$300,000** in co-pay assistance for medications.

Through our pharmacy, patients have received nearly **\$2,000,000** worth of free medication directly from pharmaceutical companies through the first-half of the year.

8940 N Wood Sage Rd | Peoria, IL 61615 | 309.243.3000 | illinoiscancercare.com/pharmacy



Thank you to the Washington Softball team that came to present a check and visit with the patients.



Over the past four years, the Fraternal Order of Eagles have donated over \$13,000 to the Illinois CancerCare Foundation. Our thanks for all the work that goes into their annual fundraising event.



The May 13 Advancing a Cure Lecture was a hit! Look for upcoming announcement of the Fall 2015 Advancing a Cure Lecture.



Swing for the Cure

The fifth annual Swing for the Cure was held on Friday, May 29. Our thanks to Fortner Insurance Agency, Inc., Heartland Bank and Trust Company, Hot Shots Nuclear Medicine, Oberlander Electric, Otto Baum Construction, Par-A-Dice Hotel Casino and Robert W Baird and Co Incorporated for their support in providing shirts and bags to all cancer survivors in attendance. Illinois CancerCare provided tickets to 650 patients and their families along with 100 Illinois CancerCare Staff members and their families. The event concluded with a colorful fireworks show! Thanks to all the Chiefs staff who help make the evening a memorable one for patients and caregivers.



Calendar of Events

Monthly Programs for Cancer Patients, Survivors & Caregivers provided by the Hult Center for Healthy Living

MONDAY

Aqua Survivor | 9a | Landmark Recreation Center | 3225 N. Dries Lane, Peoria

Breath of Joy Yoga | 5p | Hult Center for Healthy Living | 5215 N. Knoxville Ave., Peoria

A registered yoga teacher who brings her experience as a cancer survivor to the class. FREE of charge and available to Breast Cancer patients, survivors & caregivers.

Beyond Beginner Tai Ji | 6:30p | Hult Center for Healthy Living | 5215 N. Knoxville Ave., Peoria

For those of you who want to challenge yourself, but are not ready for advanced, led by Cara Murdoch.

Tai Ji Circle | 7p | Hult Center for Healthy Living | 5215 N. Knoxville Ave., Peoria

Advanced gentle exercise with Cara Murdoch.

TUESDAY

Aerobics | 9a | Hult Center for Healthy Living | 5215 N. Knoxville Ave., Peoria

Gentle Exercise with low impact with instructor Beth Stauffer. All levels welcome.

Mindfulness Meditation | 5:15p | Hult Center for Healthy Living | 5215 N. Knoxville Ave., Peoria

These sessions are a very simple form of meditation, so you don't need any previous experience. Comfortable seating is provided and sitting on the floor is not required.

WEDNESDAY

Yoga with Jean | 11a | Hult Center for Healthy Living | 5215 N. Knoxville Ave., Peoria

All levels welcome.

Cancer Support Group | 1p | Hult Center for Healthy Living | 5215 N. Knoxville Ave., Peoria

Beginner Tai ji | 6:30p | Hult Center for Healthy Living | 5215 N. Knoxville Ave., Peoria

Very basic Tai Ji taught by Cara Murdoch.

THURSDAY

Restorative Yoga with Marcy | 5:30p | Hult Center for Healthy Living | 5215 N. Knoxville Ave.

As a cancer survivor, Marcy brings her experience to her classes to gently open body, heart and mind with breath and movement. Beginner friendly. Relax and restore with Marcy.

FRIDAY

Living Strong | 9a | Hult Center for Healthy Living | 5215 N. Knoxville Ave., Peoria

Strength training class with Beth Stauffer. All levels welcome.

Cancer Support Group | 10a | Illinois CancerCare | Route 91, Peoria





Support Groups & Nutritional Counseling

Individual, Family & Group Cancer Support– Free support services Monday-Friday for persons with cancer, those who have had cancer and for caregivers, facilitated by Kitty Bienemann, MA, NCC, LCPC. To make an appointment, please call 309.243.3461. Group support meets twice a week.

Kids Konnected- For children ages 5-18 whose parent, grandparent or caregiver has or had cancer. This group meets on the Third Saturday of every month from 1:30p-3p. To register for this free group, please call 309.692.6650.

Prostate Support Group “Us TOO Prostate”- Call George Melton at 309.691.6523 for dates and times.

Individual Nutritional Counseling– Free nutritional counseling sessions available Monday-Friday with Sharon Windsor, RD, CSO, LDN and Katrina Sommer, RD, LDN for patients who are experiencing side effects from cancer treatment. To make an appointment, please call 39.243.3462.

Therapeutic Services

Individual Healing Touch Session- By appointment only. Becky Dailey will see clients the 2nd and 4th Thursday of each month at 8:30a and 9:15a. For anyone currently undergoing treatment, enjoy a healing touch therapy session. Please call 309.692.6650 to schedule your appointment.

Massage Therapy- By appointment only. Massages are \$30 per hour for those in “active” treatment and \$40 per hour for those not in active treatment and caregivers. Our experienced team of massage therapists have all received specialized training in oncology massage to deliver safe, comfort-oriented massages to all affected by cancer and its treatments. Please call 309.692.6650 to schedule your appointment.

Mindfulness Meditation- Every Tuesday at 5:15p FREE to cancer patients, survivors and caregivers. These sessions are a very simple form of meditation, so you don't need any previous experience. Comfortable seating is provided and sitting on the floor is not required.

Reflexology- By appointment only. Judy Schlueter, Licensed Reflexologist will see clients on the 1st and 3rd Thursday of each month at 8:30a and 9:15a. Call 309.692.6650 to schedule an appointment.

5215 North Knoxville Avenue | Peoria, IL 61614 | p 309.692.6650 | f 309.692.6575 | www.hultthehealthy.org

I would like more information about the following services:

Social services form for patients

ACS = American Cancer Society

HCHL = Cancer Center for Healthy Living

- | | |
|-------------------------------------------------------------------------------------------------------------------------------------|------------------------------------------------------------------------------------------|
| <input type="checkbox"/> Help for children coping with a parent who has cancer (Kids Konnected) | <input type="checkbox"/> Support Networking groups (HCHL) |
| <input type="checkbox"/> Individual counseling for the patient, family members, or caregivers (HCHL) | <input type="checkbox"/> Massage therapy for patients in treatment (\$30 fee/hr.) (HCHL) |
| <input type="checkbox"/> Healthy Living classes (yoga, gentle aerobics, Tai Ji) (HCHL) | <input type="checkbox"/> Nutritional counseling (HCHL) |
| <input type="checkbox"/> Cancer Basics 101 class (ACS/HCHL) | <input type="checkbox"/> Living will/power of attorney directives (ACS) |
| <input type="checkbox"/> Financial assistance for treatment, medications, or medical supplies (ACS) | <input type="checkbox"/> Transportation assistance for appointments (ACS) |
| <input type="checkbox"/> Lifeline® Home Emergency Response System (monthly service fee) (ACS) | <input type="checkbox"/> Wigs, hats, turban resources (ACS) |
| <input type="checkbox"/> Look Good, Feel Better® (ACS) | <input type="checkbox"/> Housing/lodging information (ACS) |
| <input type="checkbox"/> Meal resources/home delivered meal programs (fee may be required) (ACS) | |
| <input type="checkbox"/> Homemaker services, such as household cleaning, errands, general assistance (per service fees apply) (ACS) | |

More information on the reverse side

Physicians



Illinois CancerCare Social Services

Illinois CancerCare is proud to partner with the Hult Center for Healthy Living and the American Cancer Society to provide the services listed on the other side to our patients and their families.

Name: _____

Type of cancer: _____

Date of birth: _____

Today's date: _____

Phone: _____

Address: _____

City: _____ State: _____ Zip: _____

E-mail: _____

Would you like more information about or receive any of the following publications?

Clinical Cancer Research Trials

- ☐ Illinois CancerCare Treatments/Trends/Tomorrow magazine
- ☐ The Hult Center for Healthy Living newsletter
- ☐ Illinois CancerCare monthly newsletter by e-mail
- ☐ No, not at this time

Information about programs & services on the reverse side